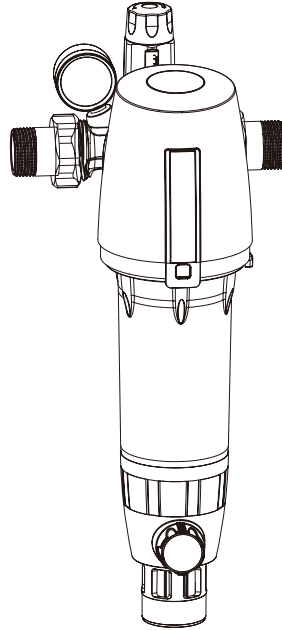


Owners Manual

Pre-Filter

Models:
CPF-8-E
CPF-8-M
CPF-8-L

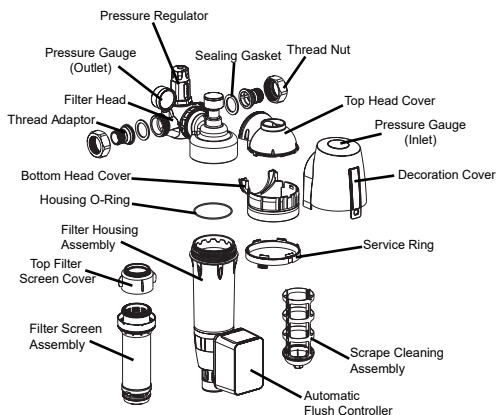
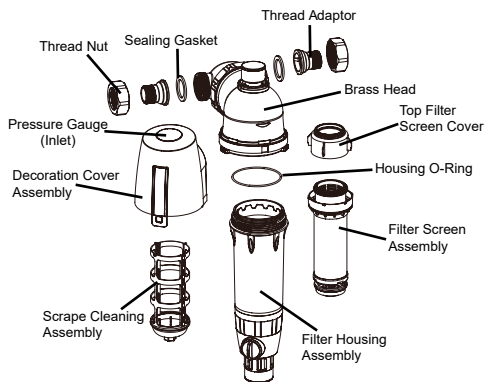
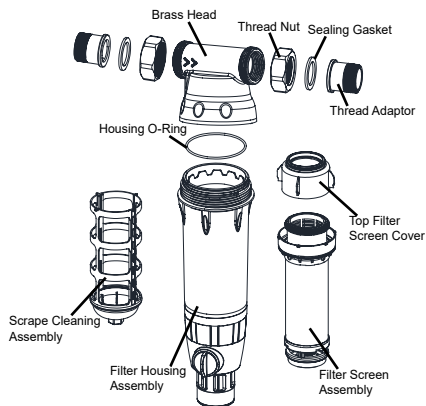


- ▣ You must read and understand the contents of this manual before installing or operating your Pre-Filter.
- ▣ The pre-filter are designed to remove the particle of impurities, dirt, rust and sediments etc. Protect the downstream equipment such as water filter, water heater, wall-hanging stove, washing machine, shower head etc.
- ▣ We guarantee that the pre-filter you receive is complete and reliable, without a qualified installer, do not install, start up or maintain the product personally. The company is not responsible for the product damage, personal injury or property loss as a result of incorrect operation.
- ▣ This product is only allowed to be installed in a dry and indoor place, keep it away from heat and children.
- ▣ This product is only designed for municipal water supply(5~40 °C), do not use it on drain line or corrosive liquid.
- ▣ When installing, make sure to observe the correct direction of flow. An arrow on the flange body indicates the direction of flow.
- ▣ Pre-filter should be installed directly behind the water metering device and be readily accessible.
- ▣ According to different water quality, it is requested to flush the filter every month at the latest.
- ▣ Do not damage any part during the process of maintenance .

Specification

Product Model	CPF-8-E	CPF-8-M	CPF-8-L
Filter Mesh	40μm		
Connection Thread	1" or 1.2"		
Rated Flow Rate	8m ³ /h		
Pressure Drop	0.2 Bar		
Water Temperature	5~40 °C		
Water Supply	Municipal		
Water Pressure	0.1~1 MPa		

Exploded View

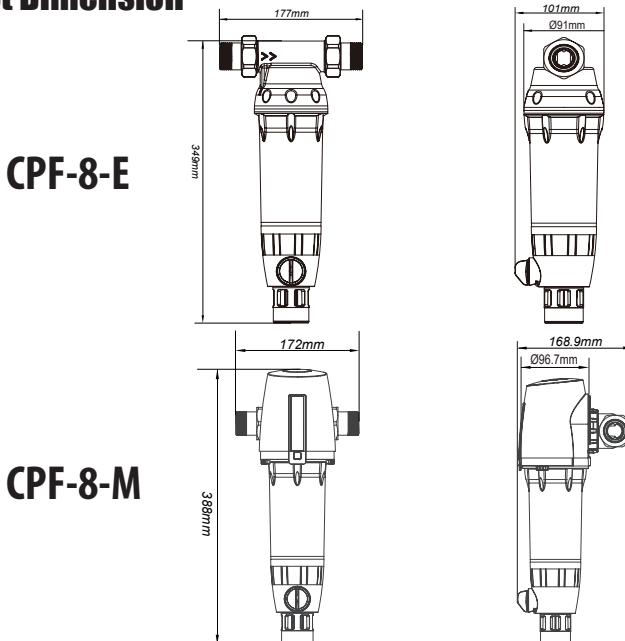


CPF-8-E/M/L

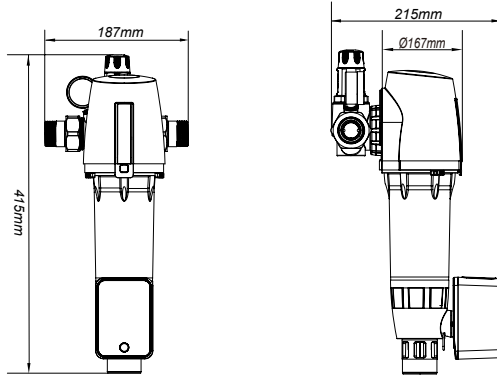
Package Contents

Accessories	Model	CPF-8-E	CPF-8-M	CPF-8-L
Pre-Filter Assembly		× 1	× 1	× 1
Thread Adaptor (1.2" female × 1" male)		× 2	× 2	× 2
Sealing Gasket		× 3	× 3	× 3
Bracket		× 1	× 1	× 1
Filter Housing Wrench		× 1	× 1	× 1
Housing O-Ring		× 1	× 1	× 1
5/8" Drain Tubing		1×110cm	1×110cm	1×110cm
Drain Connector (1/4" thread × 12.5mm)		× 1	× 1	× 1
Drain Connector O-Ring		× 1	× 1	× 1
Swelling Screw		× 2	× 2	× 2
Self-Tapping Screw		× 2	× 2	× 2
Pressure Gauge		/	/	× 1
Automatic Flush Controller		/	/	× 1
Power Adaptor		/	/	× 1
Manual		× 1	× 1	× 1

Product Dimension

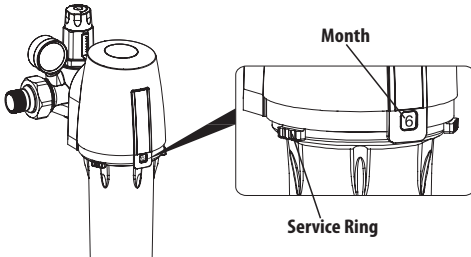


CPF-8-L



Service Ring

Applied on model CPF-8-M/L



When the process of flushing filter is completed, set the number on service ring to the current month as a reminder by means of rotating the service ring.

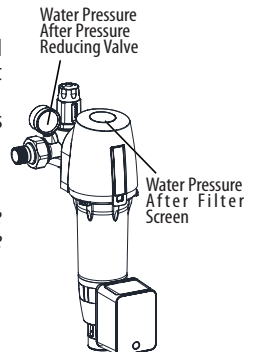
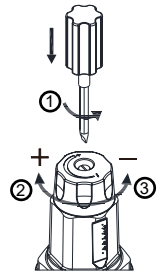
Pressure Reducing Valve

Applied on model CPF-8-L

The pressure reducing valve installed on L-series products can effectively prevent the damage to water equipments caused by high pressure or water hammer. The pressure reducing valve is factory set to 4 bar and can be adjusted in a range from 1 to 6 bar, follow the instructions below to adjust the outlet pressure.

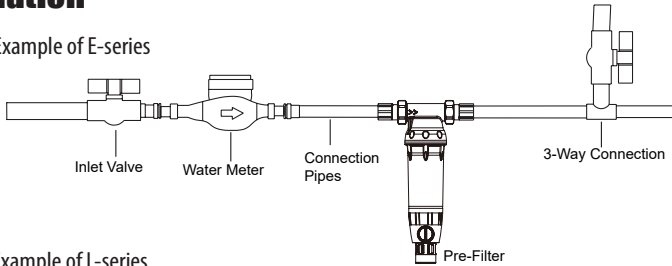
1. Use flat head screwdriver to unfasten the locking screw.
2. To increase the pressure: turn the adjustment knob in the direction of the plus symbol (+) and observe the outlet pressure gauge. (Outlet pressure is always lower than inlet pressure)
3. To reduce the pressure: turn the adjustment knob in the direction of the minus symbol (-).
4. When the desired outlet pressure is reached, tighten the locking screw again.

Note: ensure the water equipment are all closed before you start to adjust the pressure reducing valve, in the process of adjusting outlet pressure, drainage ball valve need to be open&close many times, observe the outlet pressure gauge when the ball valve is closed.

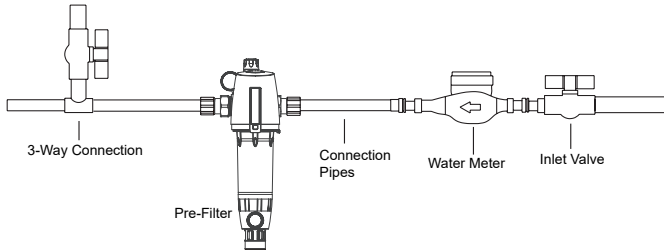


Installation

1 Example of E-series



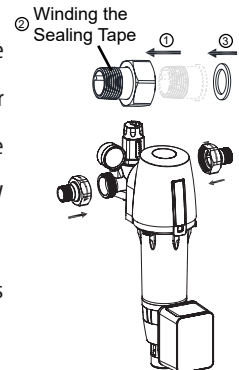
Example of L-series



- Close the inlet valve, release the pressure in pipes.
- Install the pre-filter as the figure indicated above.
- When installing, make sure to observe the correct direction of flow. An arrow on the flange body indicates the direction of flow.
- Install the filter with main axis in vertical position.

2

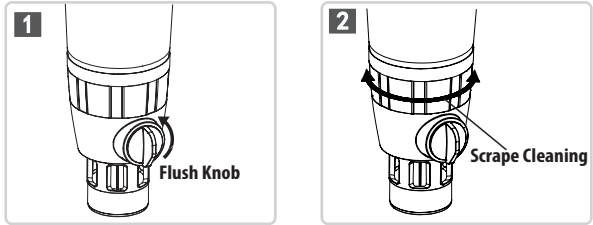
- Pre-filter must be installed by a qualified person. Check to ensure the accessories are complete before installation.
- Special welding machine is required if the PPR pipe line are used for plumbing, ensure the pipes are welding securely.
- Extra pipe lines are required if metal pipe line are used for plumbing, please follow the local plumbing codes.
- Do not install the pre-filter outdoors, which are exposed to UV radiation(sunlight), heat, oil or various chemicals.
- Use enough thread tape and make sure it is winding evenly.
- Make sure the other parts are not rotating when you tighten the thread nut.
- After the plumbing work is done, check it thoroughly to make sure if there is any leakage.



Start Up and Service

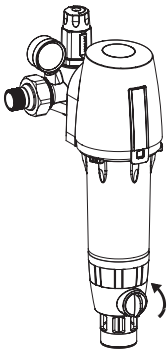
1. It is required to flush the pre-filter after installation.
2. Before flushing the pre-filter, ensure the drain pipe is connected to drain or it is fine to get one suitable container to gather the drain water.
3. Rotate the flush knob for 90° anti-clockwise to open the drainage valve, then rotate the bottom part for 3 to 4 circles clockwise and anti-clockwise to effectively clean the filter screen and filter housing.

4. According to different water quality, it is required to flush the pre-filter once per month at least and flush pre-filter for more than 30 seconds.
5. As the pre-filter is continuously used for 8~12 months, the filter screen may require to be dismantled and clean. (This should be done by a qualified person)
6. Every component should be taken care of during cleaning or maintaining process. (Original spare parts must be used for maintenance)

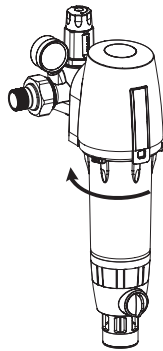


Maintenance

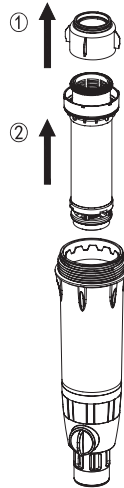
1. It is suggested to dismantle and clean the filter screen assembly if the contamination can not be removed by the process of normal scrape or flush cleaning.
2. Shut off the inlet water supply, release the water pressure by means of rotating the flush knob for 90° anti-clockwise. (Pic.1)
3. Use the wrench attached in carton box to screw off the filter housing. (Pic.2)
4. Take out the top screen cover and filter screen assembly, then clean the contamination on top screen cover and filter screen assembly. (Pic.3)
5. Take out the scrape cleaning assembly if this part need to be cleaned. (Pic.4)
6. After servicing, reverse following steps to reassemble the pre-filter.



Pic.1



Pic.2



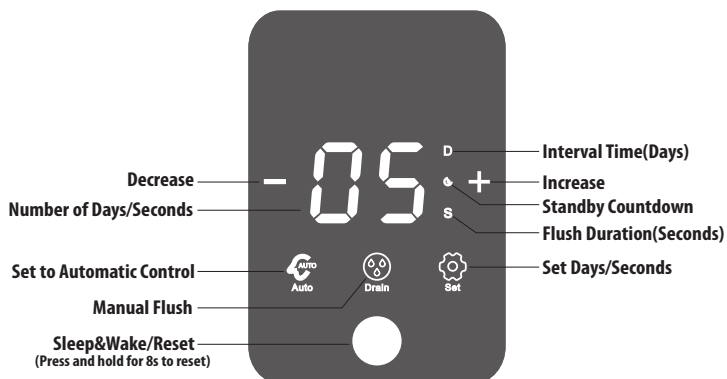
Pic.3



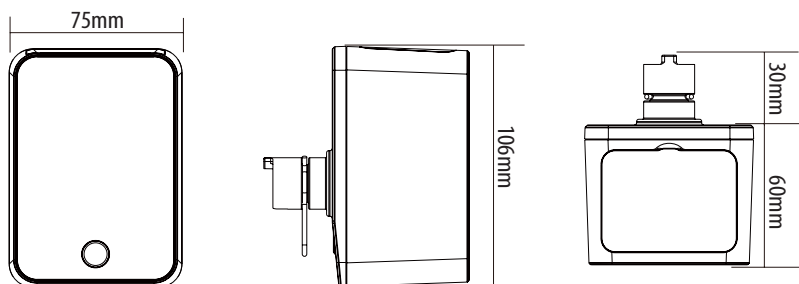
Pic.4

Automatic Flush Controller

Applied on model CPF-8-L, optional for CPF-8-E/M



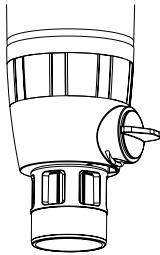
Controller Dimension



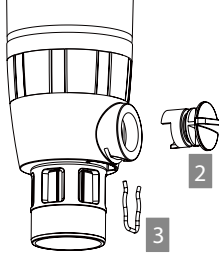
Controller Specification

Product Model		Q2-01
Power Supply	Battery	Three AA Size Dry Batteries
	Adaptor	Input 100~240V AC 50/60Hz Output 5V DC 1A
Ambient Temperature		5~40℃
Flush Duration Setting		15s/30s/45s/60s/90s
Flush Interval Setting		1~99 Days
Auto Setting		15 Days/15 Seconds

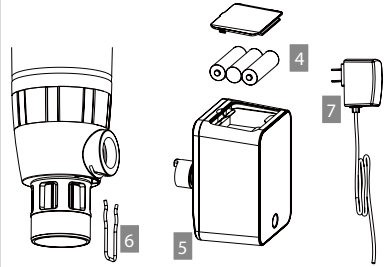
How to install automatic flush controller on CPF-8-E/M?



1. Make the flush knob at horizontal position (ball valve was at close status), ensure there is no water pressure inside.



2. Remove the clamp ring.
3. Remove the flush knob.



4. Install the battery into controller. (for battery supply only)
5. Install the controller onto filter assembly.
6. Install the clamp ring back.
7. Connect the power adaptor. (for direct power source only)

Note: 1. The installation process above must be followed and should be done by a qualified person.

2. After installation, manually operate the automatic controller to open & close the ball valve several times to check if it is working properly.

Troubleshooting

Problem	Possible Causes	Possible Solution
No Product Water	1. Water supply is shut off. 2. Inlet valve is not open.	1. Wait water supply restore. 2. Open the inlet valve.
Not Enough Product Water	1. Inlet valve is not fully open. 2. Filter screen is clogged.	1. Open the inlet valve completely. 2. Flush and clean the filter screen assembly, remove the debris.
Leaks on Connection	1. Connection is not installed well. 2. Connection is not tightened. 3. Not winding enough thread tape. 4. Sealing gasket is aging and damaged.	1. Check and make sure the sealing gasket is flat and not be squeezed. 2. Use the wrench to tight it. 3. Use enough thread tape and make sure it is winding evenly. 4. Replace the sealing gasket.
No Pressure Displayed	1. Pressure gauge damaged. 2. No water supply.	1. Replace the pressure gauge. 2. Open the inlet valve.
Display Error Code "E0"	Low Battery Power	Replace Battery Power
Display Error Code "E1"	Ball valve not open completely.	1. Press and hold Reset Key for 8s to reset control module. 2. If Reset process not work, replace control module.
Display Error Code "E2"	Ball valve not closed completely.	1. Press and hold Reset Key for 8s to reset control module. 2. If Reset process not work, replace control module.